

Mimosas Serranas

Clarineto

1.º Octo. No. 1.

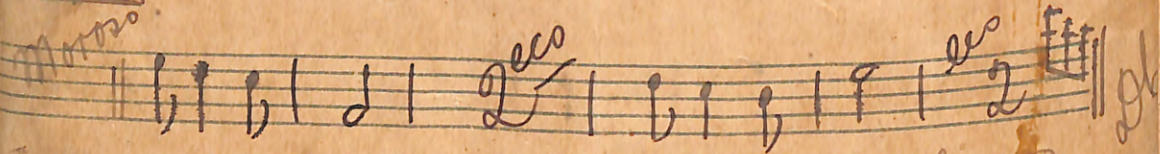
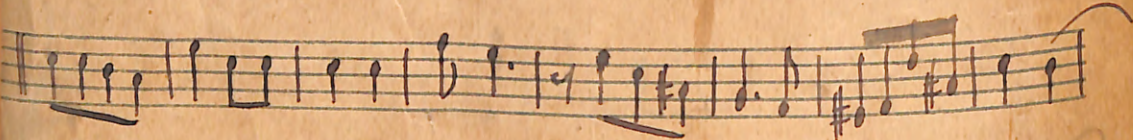
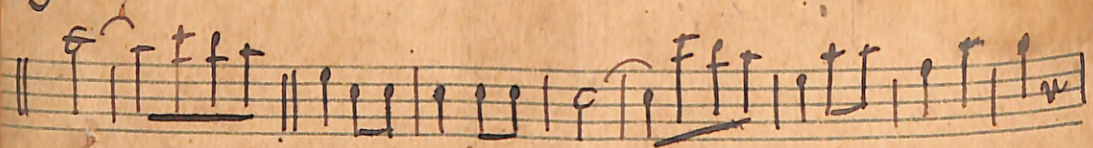
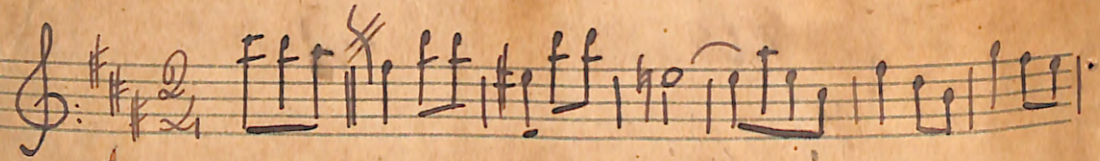
Canto

Coro

Do as Ca

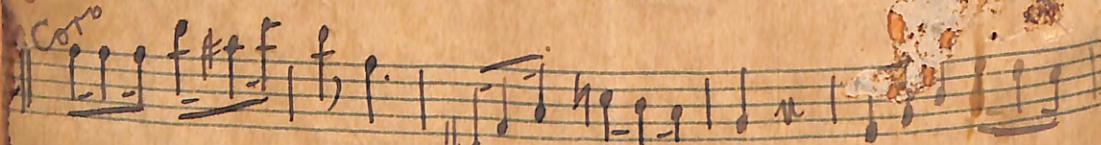
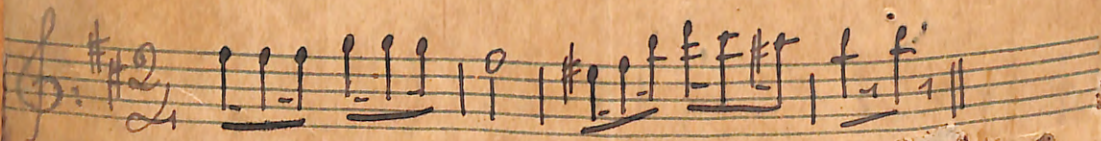
N^o 2.

1^o Acto

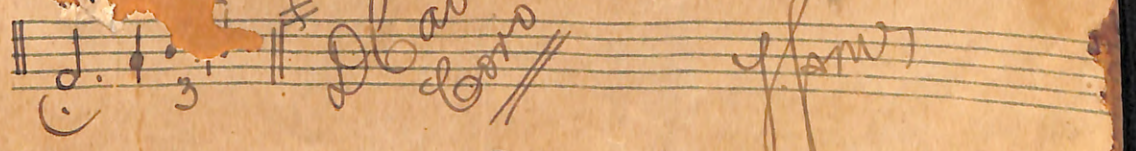
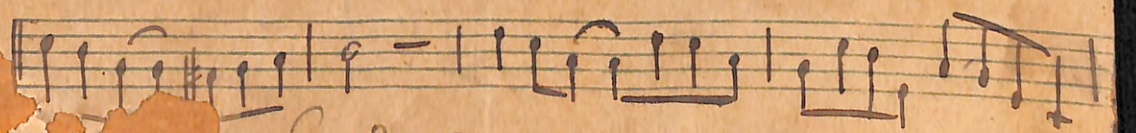
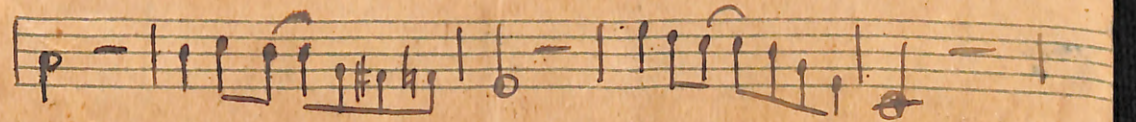
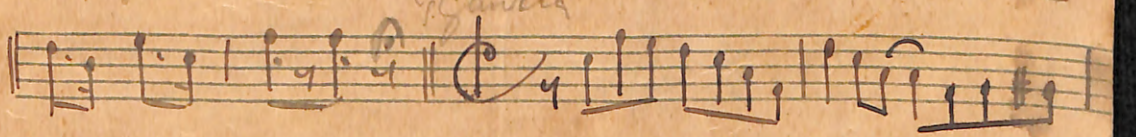
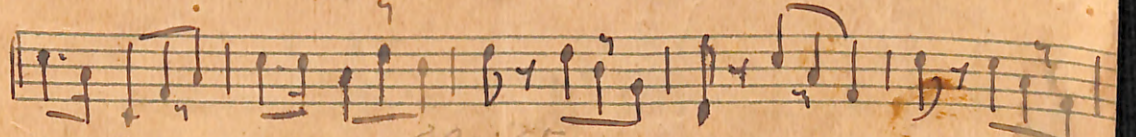
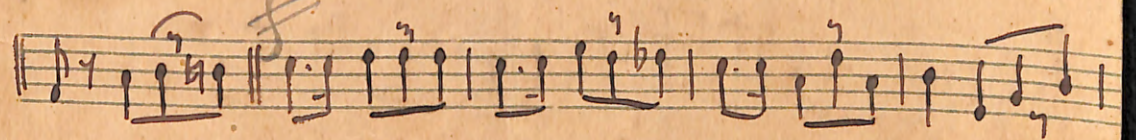
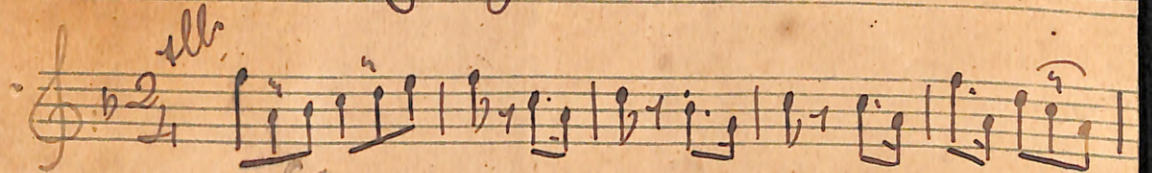


N^o 3.

ff



N^o 4.



Fin do 1^o Acto

2^o Acto.

N^o 1.

Handwritten musical score for No. 1, Act 2. The score is written on ten staves. It begins with a treble clef, a key signature of two sharps (F# and C#), and a 2/4 time signature. The notation includes various rhythmic values, accidentals, and dynamic markings such as *ff* and *ffz*. The piece concludes with a double bar line and a repeat sign.

ffz

Acto. - N^o 2. - Minuas Terrauas - Clarinetto

Handwritten musical score for No. 2, Act 2. The score is written on five staves. It begins with a treble clef, a key signature of one sharp (F#), and a 2/4 time signature. The notation includes various rhythmic values, accidentals, and dynamic markings such as *ffz* and *ffz*. The piece concludes with a double bar line and a repeat sign.

N^o 3.

Handwritten musical score for No. 3, Act 2. The score is written on five staves. It begins with a treble clef, a key signature of one sharp (F#), and a 2/4 time signature. The notation includes various rhythmic values, accidentals, and dynamic markings such as *ffz* and *ffz*. The piece concludes with a double bar line and a repeat sign.

ffz

ffz

- 2^o Acto -

N^o 1.

Allo
f *Coro* *X*

Fin do 2^o Acto.

3^o Acto.

N^o 1.

- *Finis* -

Com esp.

No. 2.

And^{te}

Handwritten musical notation for No. 2, measures 1-4. The notation is on a single staff in treble clef, with a key signature of one sharp (F#) and a time signature of 2/4. The music consists of a series of eighth and sixteenth notes, with some rests. The fourth measure ends with a double bar line and the word *pl.* (piano) written below the staff.

No. 3.

Handwritten musical notation for No. 3, measures 1-6. The notation is on a single staff in treble clef, with a key signature of one sharp (F#) and a time signature of 2/4. The music consists of a series of eighth and sixteenth notes, with some rests. The first measure is marked with *Canto* above the staff. The notation continues for six measures, ending with a double bar line and a sharp sign (#).

